



British Open 2011 Escorted Tour England's Golf Coast and London Highlights 8 nights / 4 rounds Saturday 9 July – Monday 18 July, 2011

SATURDAY, JULY 9

This evening depart the US.

SUNDAY, JULY 10

Arrive in Manchester Airport. Once you have passed through Immigration and collected your luggage you will be met in the arrivals hall by your PerryGolf representative and transfer to your awaiting transportation. Transfer to Southport. (1hr)

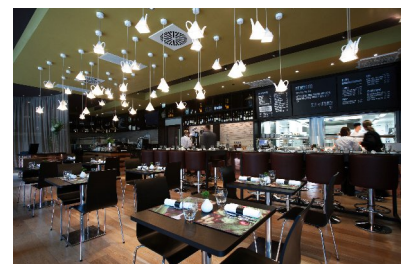
Check in at the **Vincent Hotel, Southport**. Southport lies on the coast just 20 miles north of Liverpool and is a traditional Victorian seaside town.

The Vincent is situated overlooking Lord Street, Southport's Parisienne Boulevard. A boutique hotel with 60 guest studios, residences and penthouses. The guestrooms at the Vincent are cool and stylish. Sink into the ultra comfortable King-size or Twin beds, and surround yourself with specially selected Frette cotton sheets. State-of the art technology is everywhere free high speed internet access, Wall mounted HD LCD TV's, workstations, the latest Pay-per View Blockbuster movies and two direct dial telephone points.

The remainder of the day is free to relax and settle into your new surroundings. Take the opportunity to walk along Lord Street, with a blend of unique boutiques, designer names and high street brands on one long picturesque boulevard. You'll enjoy a stroll down this iconic street with its beautiful Victorian canopies edged with scenic gardens.

This evening join your PerryGolf Host and fellow participants for a Welcome Drinks Reception followed by Dinner in a local restaurant (tour inclusion).

Overnight: The Vincent Hotel, V Residence Room



MONDAY, JULY 11

Following breakfast transfer by motorcoach (60mins) for golf at **Royal Lytham & St. Annes**. Founded in 1886, the present course was constructed in 1897. It is one of the premier links courses in the world, host to ten Open Championships, two Ryder Cups and numerous other major tournaments including the Women's and Seniors Open Championships. The Open Championship will once again return to Royal Lytham in 2012.

Nestling between two busy seaside resorts, the Royal Lytham and St. Annes Golf Course is one of the most unique courses in the rotation of the British Open. It is a links in every sense of the word, with sandy soil and the wind blowing in from the Irish Sea. Open to the elements, the trees on the course permanently lean sideways, with the wind often proving a formidable competitor in the homeward five holes of the course. Unusually, the course is set amongst a Victorian housing estate, and occupies a limited piece of land, with red-brick houses in plain view.

The course is well designed, it opens with a Par 3, the only major championship course to do so. The first four holes and last five are said to be amongst the trickiest in Britain, but some respite is offered in between. Holes 16 to 18 have produced some of the most memorable moments in major championship history, 16 is the scene of Seve's famous 'car park' shot 1979. Standing behind the 18th green, the grand Victorian clubhouse, with its oak-panelled dining room, offers a haven from the elements.

Golfers enjoy **lunch** in the clubhouse (a green fee inclusion) where you can soak up the history of previous championships.

Return to Southport late afternoon. This evening dinner is on your own allowing you to sample the many dining options available in Southport.

Overnight: The Vincent Hotel, V Residence Room



TUESDAY, JULY 12

Following breakfast transfer this morning for golf (20mins) at **Formby Golf Club**.

Formby Golf Club is one of the classic links courses of the Lancashire coastline. Although somewhat protected from the elements by pine trees that line several of the holes, the course is tough, particularly when the wind does break through. Such is the profusion of wildlife and plants at Formby that it has been declared a Site of Special Scientific Interest with the magnificent, fragile dunes a designated conservation area.

Formby has hosted many important national and regional amateur golf events, particularly three Amateur Championships. It was at Formby that Jose-Maria Olazabal beat Colin Montgomerie to win the final of the Amateur Championship in 1984 and young Italian sensation Matteo Manassero won here in 2009.



Modelled by three of golf's greatest architects, the course measures from the members' tees 6,496 and championship tees a tremendous 7,024. The course is in good condition all year round, the greens are firm and the undulating fairways excellent. However, accuracy and concentration are prerequisites for every hole, with the heather and rough forming a natural boundary together with bunkers and sandhills, it does not serve the golfer to be unfocused.

If space exists on the day off play it is possible to play an additional 9 or 18 holes.

Return to the hotel by mid afternoon allowing time to perhaps fit in a treatment in V Spa.

This evening enjoy dinner with your fellow participants in the **Warehouse Kitchen & Bar restaurant** (tour inclusion). One of Southport's finest restaurants.

Overnight: The Vincent Hotel, V Residence Room



WEDNESDAY, JULY 13

Following breakfast this morning transfer for golf (60mins) at the historic **Royal Liverpool Golf Club (Hoyleake)**.

Royal Liverpool lies at the very heart of the history and development of golf in Britain. Built in 1869, it is the 2nd oldest of all the English seaside courses. Robert Chambers and George Morris laid out the original course, and back then the land doubled as a race track. In 1871, it received its Royal patronage. Many of the great events in the history of golf have their origins at Hoyleake including the first British Amateur in 1885 and in 1921 a match between the USA & Great Britain which we now know as the Walker Cup. Their most famous members John Ball and Harold Hilton won the Amateur Championship and the Open Championship on many occasions. It was at Hoyleake that Bobby Jones won the Open Championship and the 2nd leg of his famous "Grand Slam". The Open has been held on 11 occasions most recently in 2006 Championship when Tiger Woods retained the famous claret jug. The Open will return to Hoyleake again in 2014.

The links is among the toughest championship tests in the United Kingdom. Any such misplaced beliefs are firmly dispelled upon playing the wicked opening hole where out-of bounds threaten both from the tee and on your approach to the green. (Played as the 3rd during the Open). Another of the fine holes on the front-nine is the long par three, 7th. The most attractive area of the course may be around the turn. The par four, 12th hole is arguably the finest hole on the links and requires a big drive to carry the three bunkers, which guard the left hand corner of the dogleg you then face a dangerous approach to a well protected green. The par five, 14th hole, protected by bunkers on the left and mounds on the right, is the start of the difficult closing stretch, which will not disappoint. *(Please note for the Open Championship the layout is altered so the course finishes at the 16th to accommodate grandstands.)*



Return to Southport via Liverpool's Albert Dock. The Dock is the home of Tate Liverpool, the award-winning Beatles Story, Merseyside Maritime Museum and the International Slavery Museum. It also houses a number of fashionable bars and restaurants. The opportunity exists to spend some time in the complex before returning to Southport.

Dinner is via own arrangements this evening.

Overnight: The Vincent Hotel, V Residence Room



THURSDAY, JULY 14

This morning is left free to enjoy time on your own before heading to **Royal Birkdale Golf Club** after lunch. (5mins)

Royal Birkdale stands out as a perfect example of links golf. It is currently the number one course in England and consistently ranked highly in the Top 100 courses in the world. The Club was formed in 1889, starting life as a nine hole course. In 1897 the decision was taken to move to Birkdale Hills where an 18 hole course was constructed. The growing stature of the club was acknowledged in 1951 when the King gave his permission for the club to be known as The Royal Birkdale Golf Club.

The course has been the stage for many great golf championships including the Walker Cup, the Curtis Cup, the Ryder Cup. On nine occasions now it has hosted The Open Championship, most recently in 2008 when Pdraig Harrington won the claret jug.

The ever present wind, whistling down the fairways when it comes from the sea, adds to the challenge. Each hole runs through a landscape of high dunes, the fairways are flat and fair and from the tee there is generally a clear view of the task ahead. Each hole is memorable, from The Open Championship tee the 13th measure 498 yards, one of the longest par 4s in championship golf.

Visitors to the course can walk in the footsteps of many of golf's legends, among them Open Winners, Peter Thomson, Arnold Palmer, Lee Trevino, Johnny Miller and Tom Watson. On the 15th hole, a plaque commemorates Arnold Palmer's great shot in appealing weather conditions, on the way to his Open win 1961. The clubhouse is built in a distinctive art-deco style and stands overlooking the 18th green. The enormous bay window in the lounge gives a spectacular view over the course.

Dinner is via own arrangements this evening.

Overnight: The Vincent Hotel, V Residence Room



FRIDAY, JULY 15

Following breakfast check out from the Vincent Hotel. No golf is scheduled for today as the group travels south by motorcoach to London.

The journey will break in **Oxford** allowing time for lunch or to explore this historic city on foot. Thirty-nine colleges make up the university, their elegant honey-coloured buildings wrapping around winding cobbled streets. Butting up against all that fine architecture, are celebrated libraries, world-class museums and historic pubs as well as chic restaurants, trendy bars and exclusive shops.

Continue to central London and check into the **Radisson Edwardian Kenilworth Hotel** by mid afternoon.

The hotel holds a prime location in Bloomsbury, 50 metres from the British Museum. Oxford Street, Covent Garden and Soho are also within walking distance.

This evening dinner in pre-theatre style before enjoying in a **West End Show** in London's Theatreland. (dinner & show are tour inclusions)

Overnight: Radisson Edwardian Kenilworth, Standard Room



SATURDAY, JULY 16

Following breakfast join your London Tour Guide for a days sightseeing in this most vibrant of cities. The tour will be conducted as both a walking tour and also in the coach to give an overview of the city highlights.

Watch the **Changing of the Guard**, one of the oldest and most familiar ceremonies associated with **Buckingham Palace**. In this process a New Guard exchanges duty with the Old Guard and the handover is accompanied by a Guards band. The Queen's Guard usually consists of Foot Guards in full-dress uniform of red tunics and bearskins.

After lunch (included) a visit to **Westminster Abbey** is planned, the setting for every coronation since 1066 and the burial ground for kings, statesmen, scientists, musicians and poets, Westminster Abbey is a true Medieval masterpiece. Stunning gothic architecture, the fascinating literary history represented by poets corner, the artistic talent that went into the statues, murals, paintings and tombs, and the fantastic stained glass, combine to make Westminster Abbey the most enduringly stunning of London's churches.



The tour will conclude with a visit to **the London Eye**. The Wheel is the largest of its kind ever to be built, at a height of 135m (450feet), it is a new landmark for London. Enjoy the breathtaking views from the heart of the city as the famous buildings of central London are spread out in a great panorama before you.

Overnight: Radisson Edwardian Kenilworth, Standard Room



SUNDAY, JULY 17

Today enjoy attendance at the final round of the **British Open Championship** at Royal St.George's Golf Club in Sandwich, Kent.

It will be the 14th time the Championship will be played at the Club. It is a wonderful venue from a visitor's point of view due to the layout of the course and the many natural vantage points affording great views of the action.

Overnight: Radisson Edwardian Kenilworth, Standard Room



MONDAY, JULY 18

Depart London this morning for transfers to London Heathrow Airport.

(Transfers only guaranteed for those passengers who purchase trans-atlantic air from PerryGolf).

LAND PACKAGE COSTING

Golfer \$4,995.00 per person Non Golfer \$3,695.00 per person Single Supplement \$1,260.00

TOUR INCLUSIONS

INCLUDED

- 8 nights Accommodation in the Vincent Hotel and the Radisson Edwardian Kenilworth Hotel. Room types as specified above
- Full English Breakfast each morning (excluding arrival day)
- Green fees and confirmed starting times for 4 rounds of golf
- Lunch on two occasions
- Dinner with wine on three evenings
- Welcome Cocktail Party with canapes
- Theatre Tickets for West End Show on July 15
- Admission Fees to London Sightseeing Attractions and the London Eye on July 16
- General Admission Ticket to the British Open on July 17
- Ground transportation throughout by luxury motorcoach including arrival and departure airport transfers. *(Transfers only guaranteed for those passengers who purchase trans-atlantic air from PerryGolf).*
- Services of PerryGolf Tour Host throughout
- All golf club handling, luggage handling and staff gratuities
- All local taxes

NOT INCLUDED

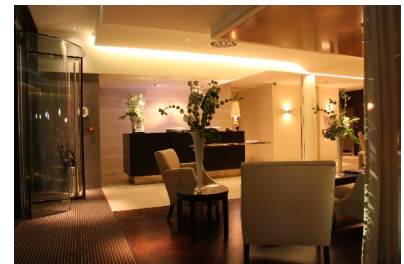
- Airfare
- Luggage, cancellation and accident insurance
- Meals and beverages other than those specified.
- Caddie fees and gratuities
- Personal expenses such as laundry, telephone calls, faxes and e-mail service

HOTEL DESCRIPTIONS

The Vincent is situated overlooking Lord Street, Southport's Parisienne Boulevard. A boutique hotel with 60 guest studios, residences and penthouses.

The guestrooms at the Vincent are cool and stylish. Sink into the ultra comfortable King-size or Twin beds, and surround yourself with specially selected Frette cotton sheets. State-of the art technology is everywhere free high speed internet access, Wall mounted HD LCD TV's, workstations, the latest Pay-per View Blockbuster movies and two direct dial telephone points.

"Tony McGee" at the Vincent Lounge is a members only bar, the Vincent's hotel guests are members for the duration of their stay. The V Cafe & Sushi Bar sells the finest in handmade Sushi, tasty Miso Soup, freshly cut Sashi, delicious Japanese dishes prepared by our Asian Sushi Chef. The Gym in the V-Spa is designed with today's busy life style in mind, a functional space equipped with the latest variety of cardio equipment, free weights, and a unique Vibro plate.



The Radisson Edwardian Kenilworth holds a prime location in Bloomsbury, 50 metres from the British Museum. Oxford Street, Covent Garden and Soho are also within walking distance. A myriad of clubs, bars and music venues are nearby for your entertainment.

Characterful, cultured and calm, the four star Radisson Edwardian Kenilworth is warmly inviting and quietly stylish in the heart of bookish Bloomsbury. Light floods the airy lobby and laid-back bar through elegant arched windows, and a striking original art collection adds real individuality.

The 186 rooms are richly decorated with sleek furnishings and marble bathrooms. Wireless Internet access, advanced telephone system with personal phone number, flat screens televisions and US 110v plug sockets feature in every room.

All rooms have air conditioning and have been ergonomically designed to give guests a comfortable space to make their own to work and play in. Bedrooms feature luxury African walnut beds and wardrobes, bespoke wall coverings and crisp cotton bed linen. Bathrooms are clad in Sicilian Carrara marble, with Jacob Delafon bathware for a more luxurious feel.

